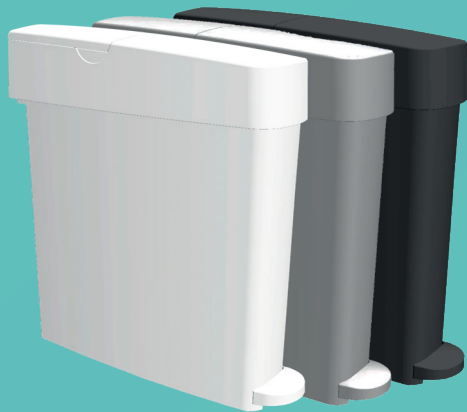


SANICARE SANITARY BIN



SPECIFICATIONS

Height: 540mm

Width: 150mm

Depth: 530mm (including pedal)

Weight: 3kg per unit

Capacity: 21 litres

PACKING INFO

Box Dimensions: 316mm (Width)
535mm (Length)
555mm (Height)

Pallet Quantity: 44 units/22 boxes



The Sanicare features a **slim** and **sleek** design and has been produced using **antimicrobial technology** within the trap which helps improve surface hygiene, **reduces the growth of bacteria by up to 99%** and **helps prevent the spread of germs**.

Available in **white, charcoal grey or grey** with a smooth gloss finish, Sanicare is made with material that is **100% recyclable**. We are very pleased to provide an additional charcoal grey Sanicare sanitary bin produced from **100% recycled material**.

Sanicare has been produced with a **front facing trap** so it can be placed on both sides of toilet cubicles, providing greater flexibility and ease of use to both servicing teams and end users. The **quick release lid** ensures quick and easy servicing.

FEATURES AND BENEFITS:

- Produced with antimicrobial technology to help reduce bacterial growth by up to 99%
- 100% recyclable
- Slim design
- Front facing trap
- Charcoal Grey option available in 100% recycled material
- Quick and easy to service
- Integrated handle
- Suitable for use with our antimicrobial sanitary liners
- Smooth interior finish
- Additional carrying bracket available
- Manufactured in the UK
- Fast Shipping

COLOURS



Grey



Charcoal Grey
*Made from 100% recycled material



White

Unicorn Hygienics Limited

Riverview, The Green, Tullynacross Road,
Lisburn, BT27 5SR

UK Tel: +44 (0) 28 9264 0827

Email: info@unicorn-hygienics.com

www.unicorn-hygienics.com